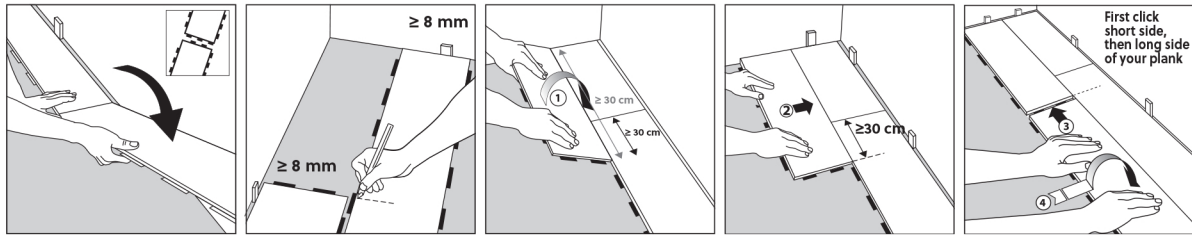


DreamClick installation manual

BERRY  ALLOC

PLANKS

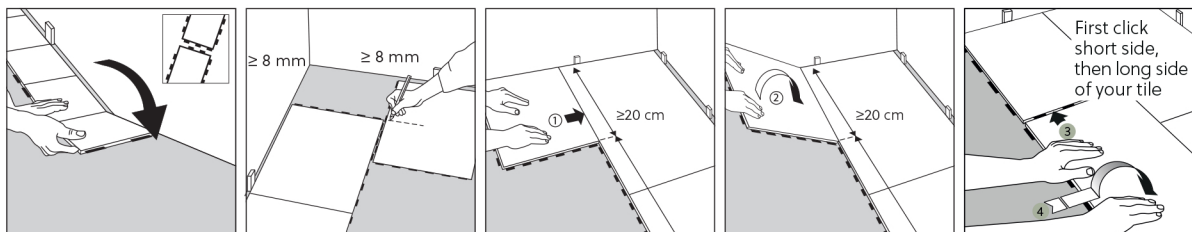


Always make sure that the short end joints are staggered by a minimum of 30 cm or three click elements when you start the next row. Use the leftover piece from the previous row as the first piece of the next row, provided that this piece is at least 30 cm long. In order to find a connection with the locking tabs of the previous row, it may be necessary to cut off an extra part of the leftover piece.



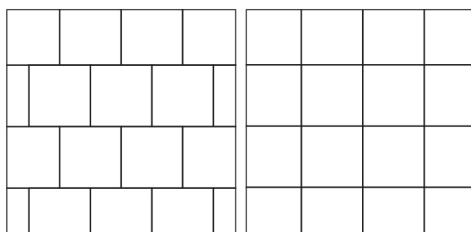
DreamClick® planks can be installed in a variety of different patterns.

TILES



Always make sure that the short end joints are staggered by a minimum of 20 cm or two click elements when you start the next row. Use the leftover piece from the previous row as the first piece of the next row, provided that this piece is at least 20 cm long. In order to find a connection with the locking tabs of the previous row, it may be necessary to cut off an extra part of the leftover piece. If the dimensions of the room require smaller pieces than 20 cm to complete your floor, these pieces should be glued together via the locking system.

A staggered pattern (offset or drop) is stronger than a stacked (straight) pattern. For this reason, we advise against to using a stacked pattern in narrow spaces. Stacked patterns can be used as of a width of 1m80.



staggered pattern

stacked pattern



Distributed by:

Wood Culture Pte Ltd (A Wholly Owned Subsidiary of Hafary Holdings Limited)

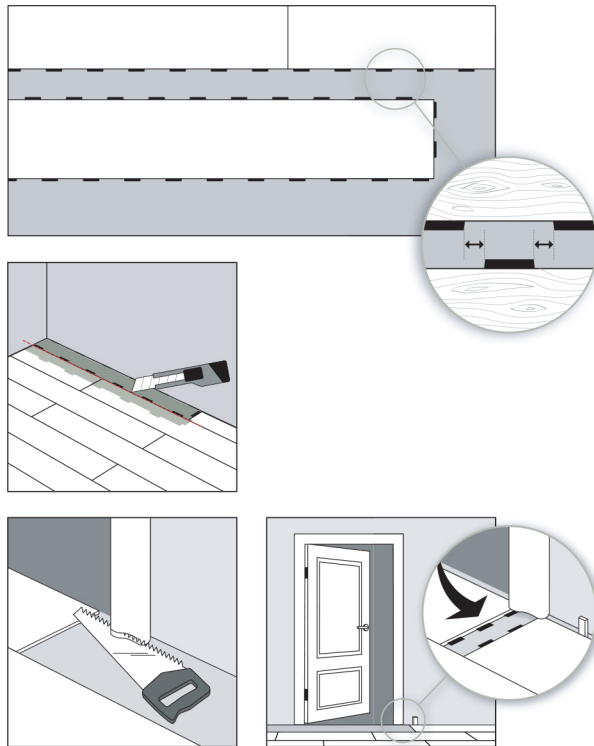
A: 11 Changi North Way S498796
T: +65 6686 2133

E: sales@woodculture.com.sg
W: www.woodculture.com.sg

facebook.com/woodculturepteltd
instagram.com/wood_culture_

DreamClick installation manual

BERRY  ALLOC



The click elements of the new row need to be positioned exactly in the middle of two locks of the previous row. From the second row onwards, always connect the short side first and then the long side.

To install the last row, position a loose plank exactly on top of the last one laid. Place another plank upside down and next to the wall, and mark the plank underneath. Cut the marked plank to size and fit into place. This method should be repeated for each plank until the last row is complete.

For door mouldings, lay a plank facedown next to the door moulding. Saw the moulding, then slide the plank under the moulding. Make sure the moulding doesn't rest on the floor.



Distributed by:

Wood Culture Pte Ltd (A Wholly Owned Subsidiary of Hafary Holdings Limited)

A: 11 Changi North Way S498796
T: +65 6686 2133

E: sales@woodculture.com.sg
W: www.woodculture.com.sg

facebook.com/woodculturepteltd
instagram.com/wood_culture_